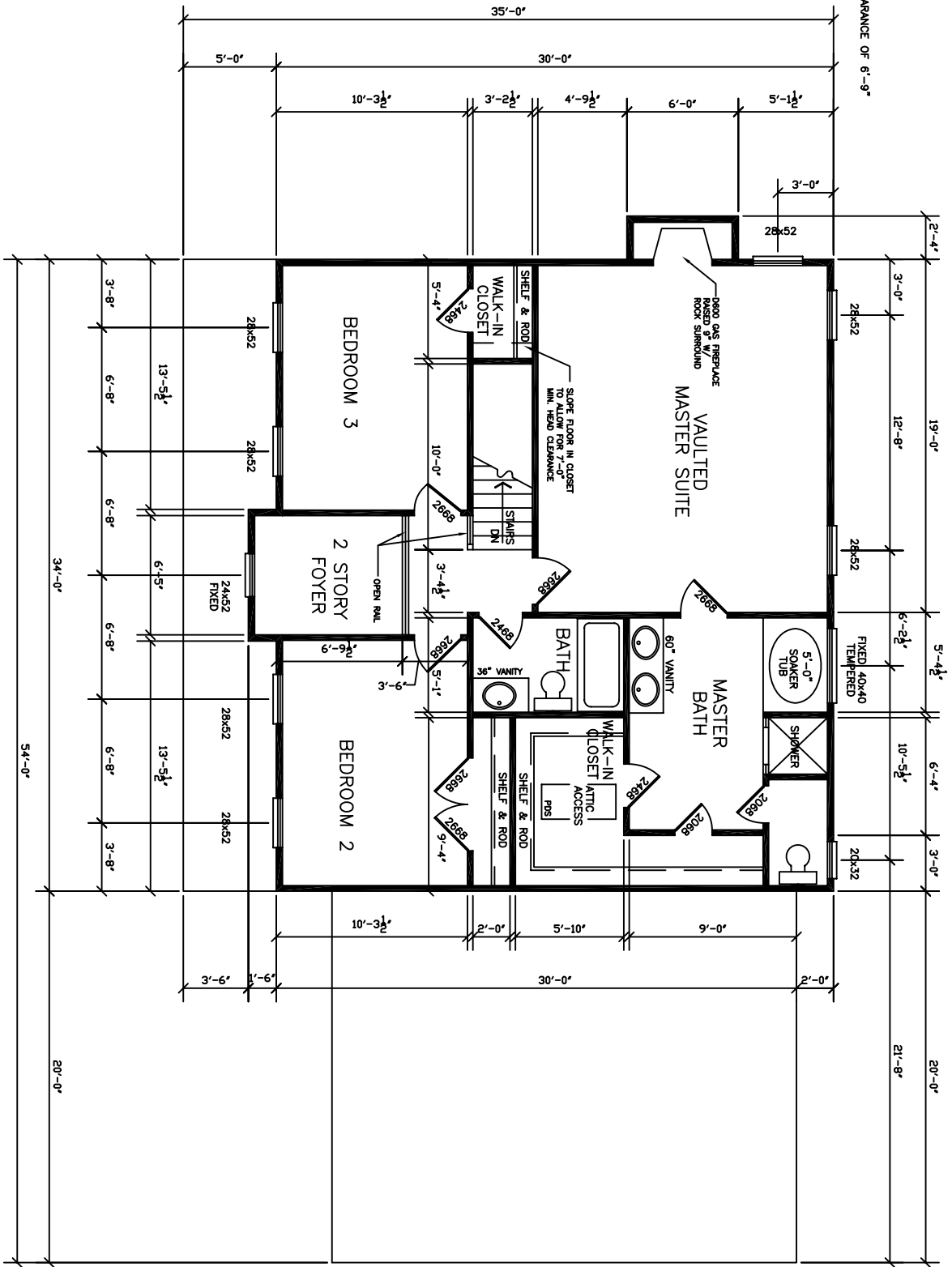


LIVING LEVEL NOTES:
 HEAT PUMP 200 AMP SERVICE
 INSULATION:
 ATTIC R-30
 EXT. WALL R-13
 BASEMENT CEILING R-19
 ATTIC VENTILATION WITH RIDGE
 VENTS AND PERFORATED SOFFIT
 VENT

STAIRS
 TREADS 10 1/2"
 RISER 7 1/2"
 WIDTH 36"
 MAINTAIN HEAD CLEARANCE OF 6'-9"

HOUSE HEIGHT:
 BASEMENT:
 FIRST FLOOR:
 SECOND FLOOR:



SECOND FLOOR PLAN