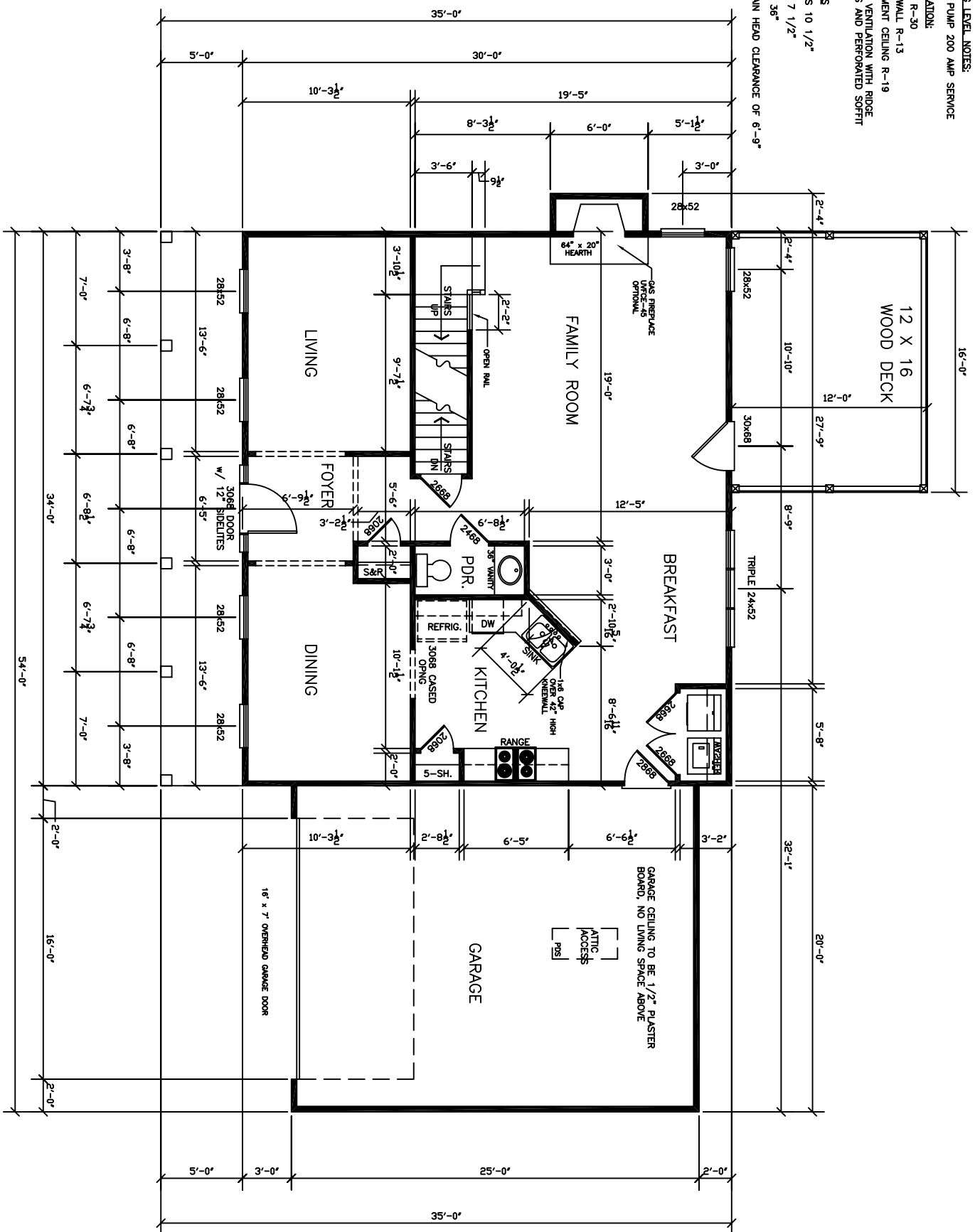


LIVING LEVEL NOTES:  
 HEAT PUMP 200 AMP SERVICE  
 INSULATION:  
 ATTIC R-30  
 EXT. WALL R-13  
 BASEMENT CEILING R-19  
 ATTIC VENTILATION WITH RIDGE VENTS AND PERFORATED SOFFIT VENT

STAIRS  
 TREADS 10 1/2"  
 RISER 7 1/2"  
 WIDTH 36"  
 MAINTAIN HEAD CLEARANCE OF 6'-9"



FIRST FLOOR PLAN

HOUSE HEIGHT:  
 BASEMENT:  
 FIRST FLOOR:  
 SECOND FLOOR: