



ARGABRIGHT CONTRACTORS, INC.
540-890-2970



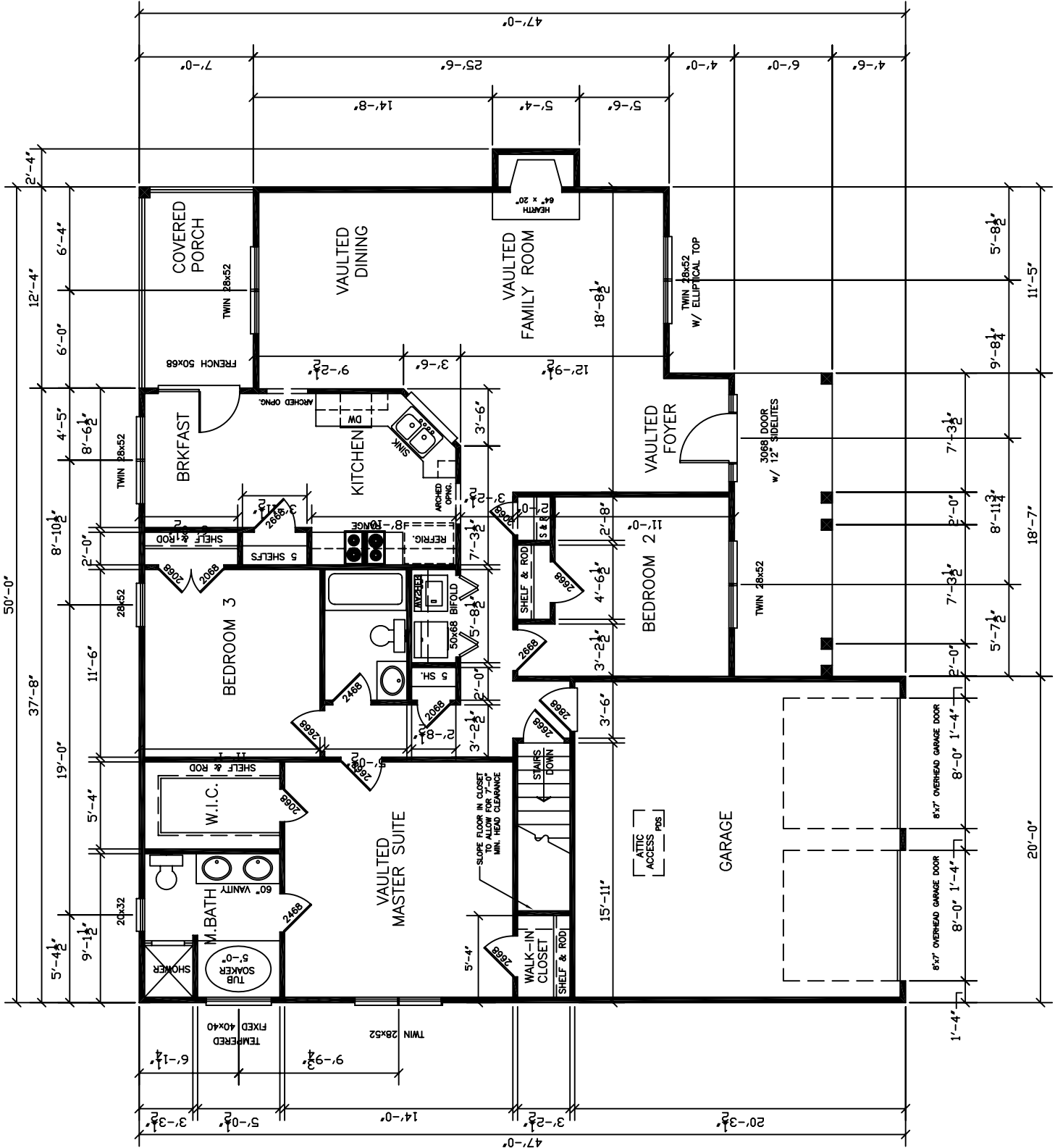
www.virginia-ridge.com

DESIGNED BY
FRANK BETZ ASSOCIATES, INC.
1800 LAKE PARK DRIVE/SUITE 101
SMYRNA, GEORGIA 30080
404/431-0888

THE BARNWELL 1500SF
CHAPEL WOODS - Lot 12

DATE: 03/01/05
SHEET: A-1

- LIVING LEVEL NOTES:**
 HEAT PUMP 200 AMP SERVICE
 INSULATION:
 ATTIC R-30
 EXT. WALL R-13
 BASEMENT CEILING R-19
 ATTIC VENTILATION WITH RIDGE VENTS AND PERFORATED SOFFIT VENT
- STAIRS**
 TREADS 10 1/2"
 RISER 7 1/2"
 WIDTH 36"
 MAINTAIN HEAD CLEARANCE OF 6'-9"
- HOUSE HEIGHT:**
 BASEMENT:
 FIRST FLOOR:
 SECOND FLOOR:



FIRST FLOOR PLAN